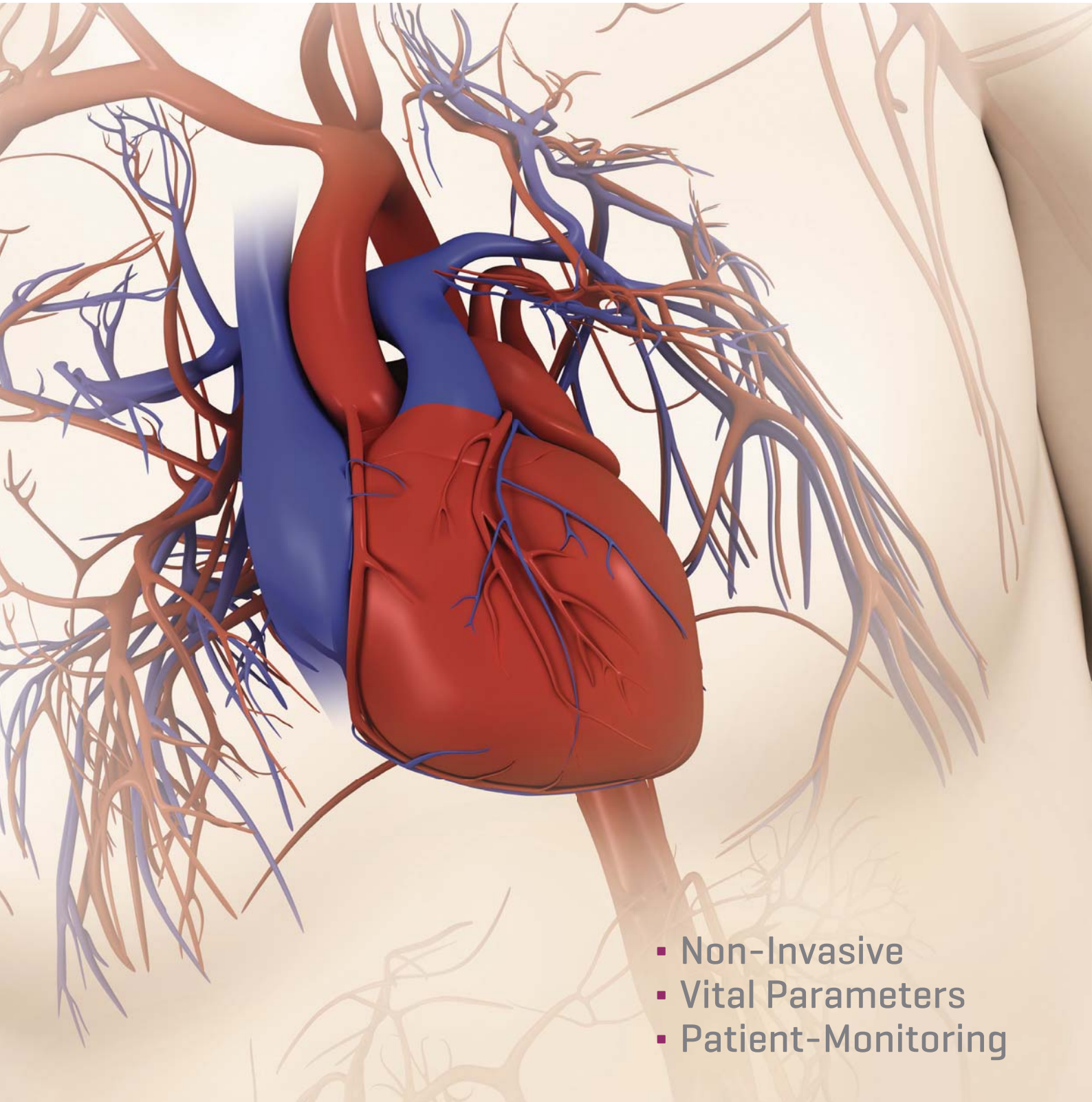


Medical Devices for Your Patient's Health
essential, immediate, reliable



- Non-Invasive
- Vital Parameters
- Patient-Monitoring

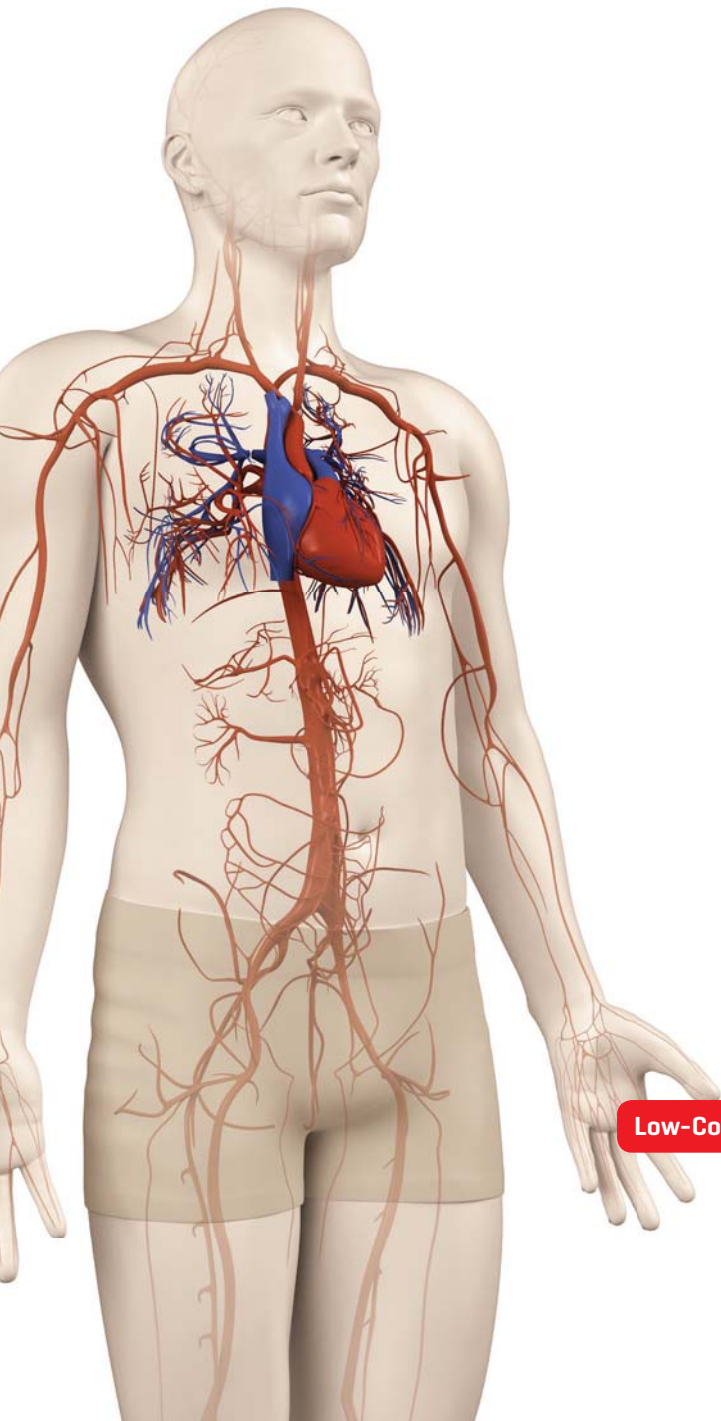
U·OXI YOUME))

Immediate Assessment of Vital Parameters – Multiple Applications

- For professional use

Suitable for

Outpatient clinics, health posts, doctor's office, emergency room, ambulance, intensiv-care, operating room, sleep clinic, intermediate care, mobile use



u-oxi Finger pulse-oximeter

REF 91100

- Automatic display-alignment
- Online USB-interface to PC

Monitoring of

- SpO2 – oxygen level of the arterial blood – non-invasive check of the respiratory system
- Heart rate – continuous monitor of heart function
- PI [perfusion index] peripheral perfusion quality
- Child probe optional



Low-Cost pulse-oximeter

u-oxi smart Basic finger pulse-oximeter

REF 91000

Monitoring of

- Measures SpO2 [arterial saturation] & HR [heart rate]
- Displays bar graph and pulse waveform

Multi-Parameter Patientmonitoring – for Professional Use

- For professional use
- Spot-check and continuous monitoring
- Audible and visible alarms;
adjustable for use in continuous monitoring
- Compact and portable with built-in
rechargeable battery
- Adult, pediatric and neonates settings –
for a wide range of patients
- Multiple accessories for adults,
children and neonates



u·vital Vital signs monitor

REF 91200



NIBP Cuff adult



Adult fingertip
SpO2 probe

Monitoring of

- SpO2 – oxygen level of the arterial blood –
a non-invasive check of the respiratory system
- Heart rate – continuous monitoring of heart function
- NIBP: Systolic pressure
Diastolic pressure

Suitable for

Outpatient clinics, health posts, doctor's office,
emergency room, ambulance, intensiv-care, operating room,
sleep clinic, intermediate care

u·sono YOUVE))

Basic Fetal and Vascular Diagnostic – Save Application, Non-Invasive

- Dual use: vascular and fetal doppler
- Fetal heart rate indicating fetal's well being
- Probes for various depth and applications



u·sono Pocket doppler, 2 MHz probe

REF 91150

Monitoring of

- Fetal heart rate (FHR)

u·sono Pocket doppler

REF 91150

optional: 3, 4, 5, 8 MHz vascular probe

Monitoring of

Arterial and venous blood flow

Suitable for

Outpatient clinics, health posts, maternity care, emergency room, midwives, gynecological clinic, homecare



u·toco YOUME)))

Basic Fetal Heart and Labor Activity Monitor



- Assessment and monitoring of uterine contraction
- Sensitive 2 MHz pulse doppler probe
- Waveform and numeric value simultaneously
- Manual fetal movement mark
- High resolution and long life built-in printer
- Twin monitoring [optional]
- Suitable after 12 week of pregnancy to monitor heart-rate of the fetus

u·toco Cardio-toco-graph, 2 MHz probe

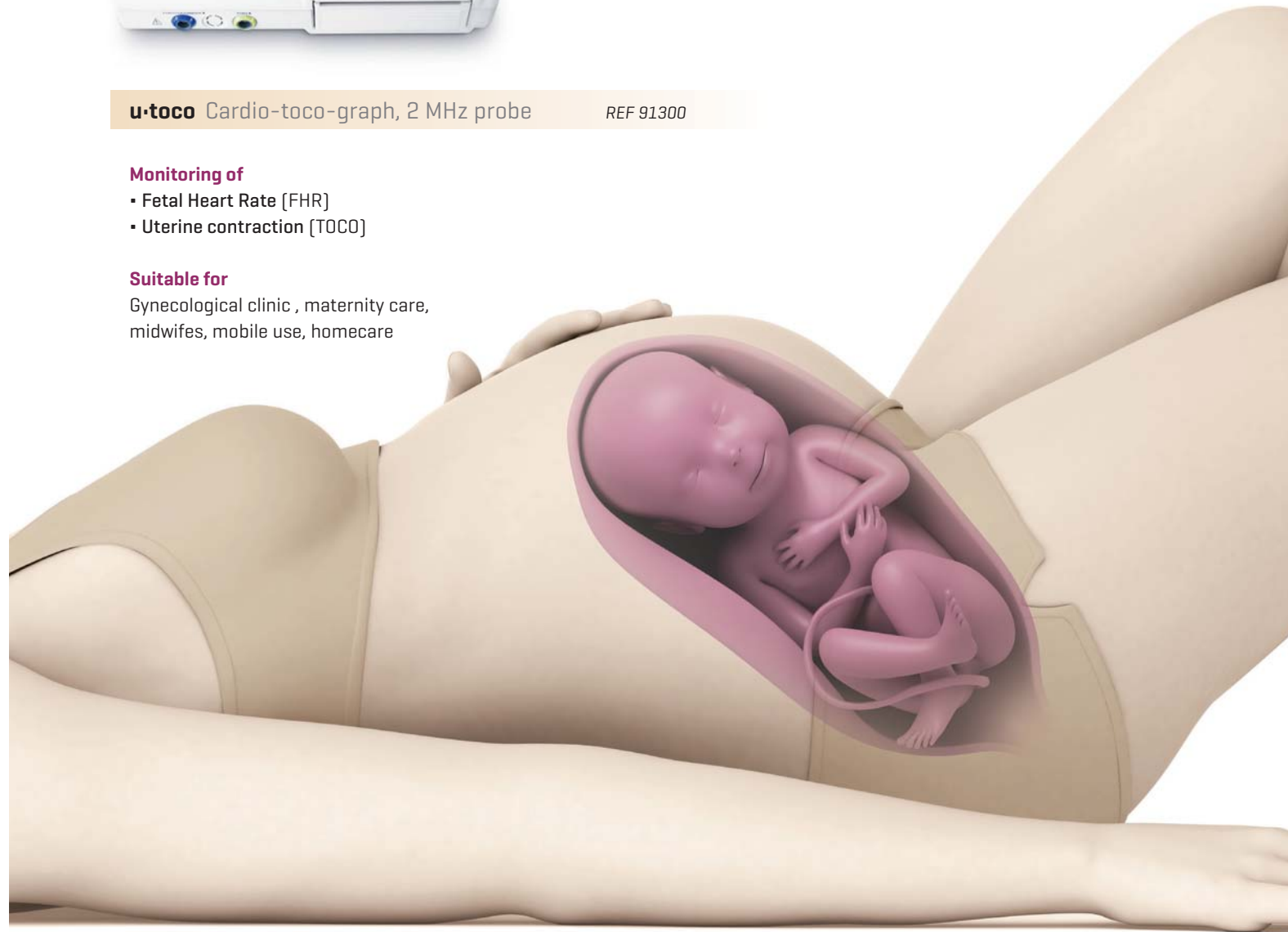
REF 91300

Monitoring of

- Fetal Heart Rate [FHR]
- Uterine contraction [TOCO]

Suitable for

Gynecological clinic , maternity care,
midwives, mobile use, homecare



Ordering Information



u·oxi Finger pulse-oximeter

REF

91100

including: USB-cable, software CD

optional: Neonatal infant probe

91120



u·oxi smart Basic finger pulse-oximeter

91000



u·vital Vital signs monitor

91200

including: Adult fingertip SpO2 probe, NIBP adult cuff

optional: Adult fingertip SpO2 probe 91210

Adult Soft Tip SpO2 probe 91211

Pediatric Fingertip SpO2 probe 91212

Adult SpO2 probe disposable 91220

Pediatric SpO2 probe disposable 91221

Infant SpO2 probe disposable 91222

Neonatal SpO2 probe disposable 91223

Digital 5-pin extension cable
[is requested for all SpO2 probes] 91230

NIBP Cuff [46 - 66 cm] thigh 91250

NIBP Cuff [33 - 47 cm] larger adult 91251

NIBP Cuff [25 - 35 cm] adult 91252

NIBP Cuff [18 - 26 cm] pediatric 91253

NIBP Cuff [10 - 19 cm] infant 91254

NIBP Cuff [6 - 11 cm] neonatal 91255

NIBP Cuff [3.3 - 5.6 cm] neonatal 91260

NIBP Cuff [4.2 - 7.1 cm] neonatal 91261

NIBP Cuff [5 - 10.5 cm] neonatal 91262

NIBP Cuff [6.9 - 11.7 cm] neonatal 91263

Printer paper u·vital [10 rolls] 91270



u·sono Pocket doppler, 2 MHz fetal probe

91150

optional: 3 MHz vascular probe 91163

4 MHz vascular probe 91164

5 MHz vascular probe 91165

8 MHz vascular probe 91168



u·toco Cardio-toco-graph, 2 MHz probe

91300

including: Toco transducer, abdomen belts, remote marker, printer paper

optional: Twin monitoring probe 91319

Printer paper u·toco [5 packs] 91350